



# Supporting College Completion for Students Experiencing Homelessness

Christina Dukes

Federal Liaison

National Center for Homeless  
Education

[cdukes@serve.org](mailto:cdukes@serve.org)

- U.S. Department of Education's technical assistance center for the federal Education for Homeless Children and Youth (EHCY) Program
- Website: [www.serve.org/nche](http://www.serve.org/nche)
- Webinars: [www.serve.org/nche/web/group.php](http://www.serve.org/nche/web/group.php)
- Helpline: 800-308-2145 or [homeless@serve.org](mailto:homeless@serve.org)
- Listserv: [www.serve.org/nche/listserv.php](http://www.serve.org/nche/listserv.php)
- Products: [www.serve.org/nche/products.php](http://www.serve.org/nche/products.php)

# Outline

---

- Setting the stage
- Support for getting into college
  - ESEA reauthorization
  - Fee waivers
  - FAFSA completion
- Support for college completion
  - Model programs and common components
  - Getting started
- Resources



# Setting the Stage

What do you  
think?

## The Value of a College Degree

- Over a lifetime, individuals with a Bachelor's degree make \_\_\_\_% more than those with only a high school diploma.
  - 42%
  - 69%
  - 84%
  - 112%



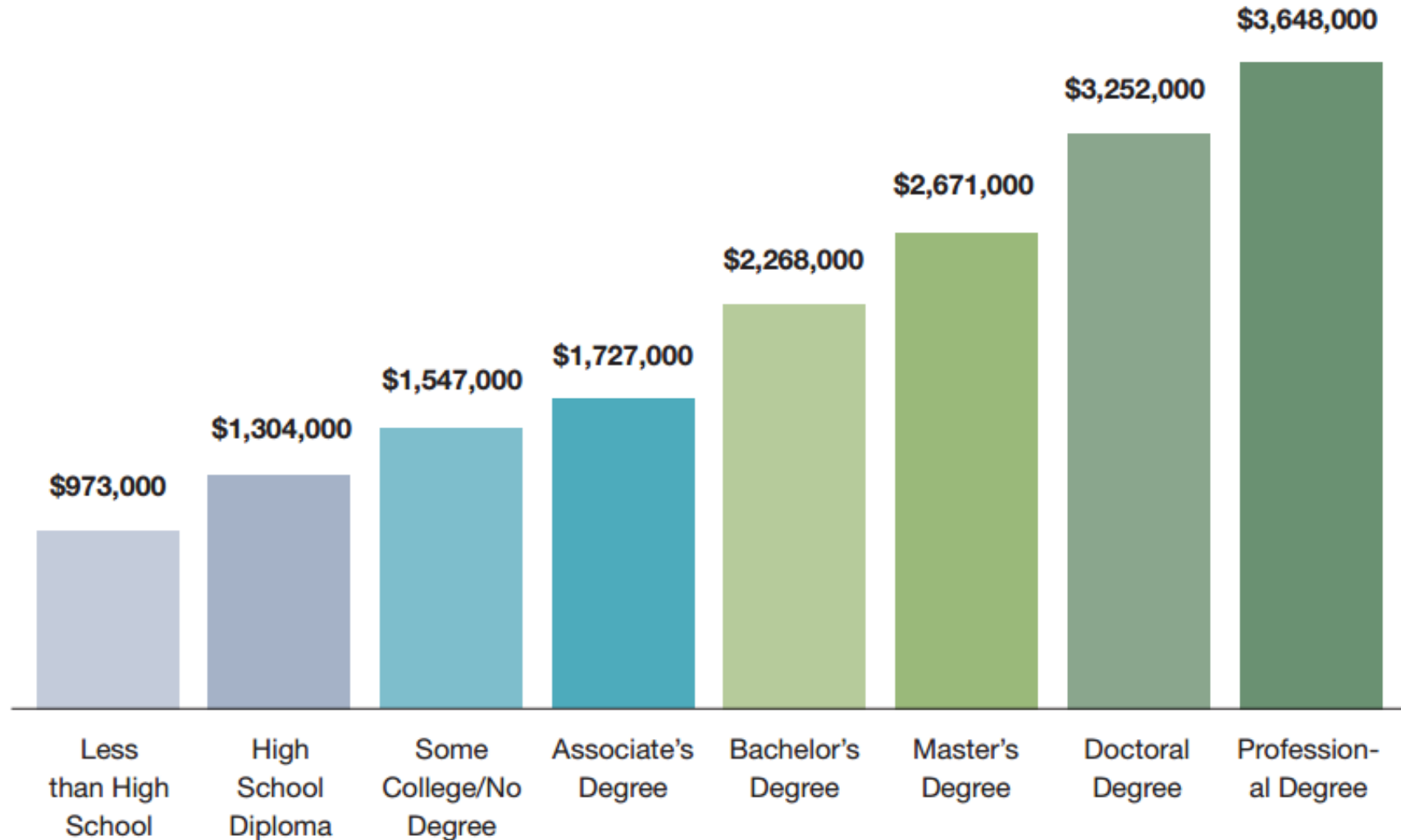
What do you  
think?

# The Value of a College Degree

- Over a lifetime, individuals with a Bachelor's degree make \_\_\_\_% more than those with only a high school diploma.
  - 42%
  - 69%
  - **84%**
  - 112%

# The Value of a College Degree

**FIGURE 1:** MEDIAN LIFETIME EARNINGS BY HIGHEST EDUCATIONAL ATTAINMENT, 2009 DOLLARS



What do you  
think?

## College Continuation Rates

- In 2015, what percentage of low-income (bottom quartile) high school graduates entered college?
  - 26%
  - 39%
  - 52%
  - 62%





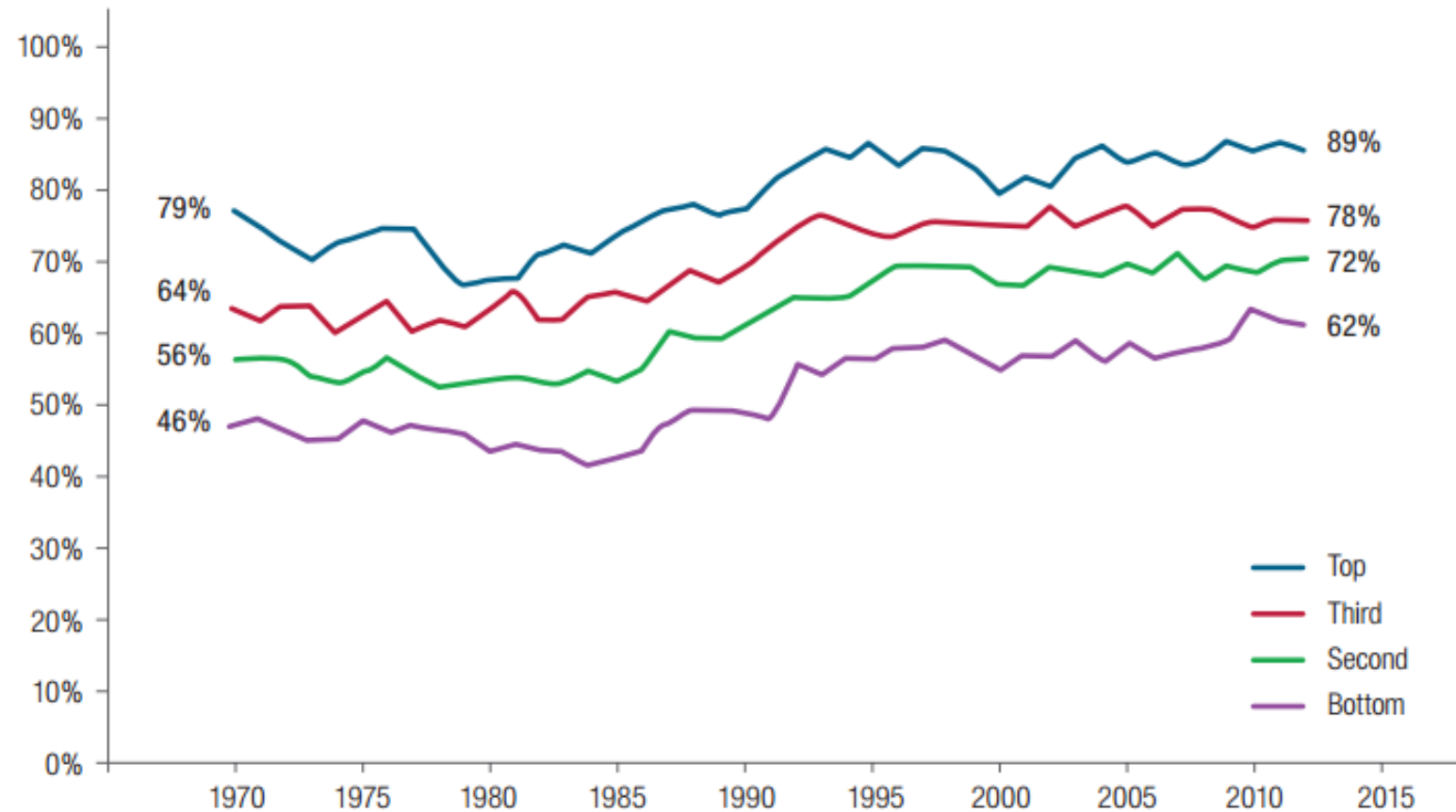
What do you  
think?

# College Continuation Rates

- In 2015, what percentage of low-income (bottom quartile) high school graduates entered college?
  - 26%
  - 39%
  - 52%
  - **62%**

# College Continuation Rates

**Equity Indicator 1b: High School Graduates College Continuation Rate (HSGCCR) by family income quartile for 18 to 24 year olds: 1970 to 2012**



What do you  
think?

## Bachelor's Degree Completion

- In 2009, what percentage of low-income (bottom quartile) students who entered college completed a bachelor's degree within 6 years?
  - 26%
  - 42%
  - 65%
  - 79%



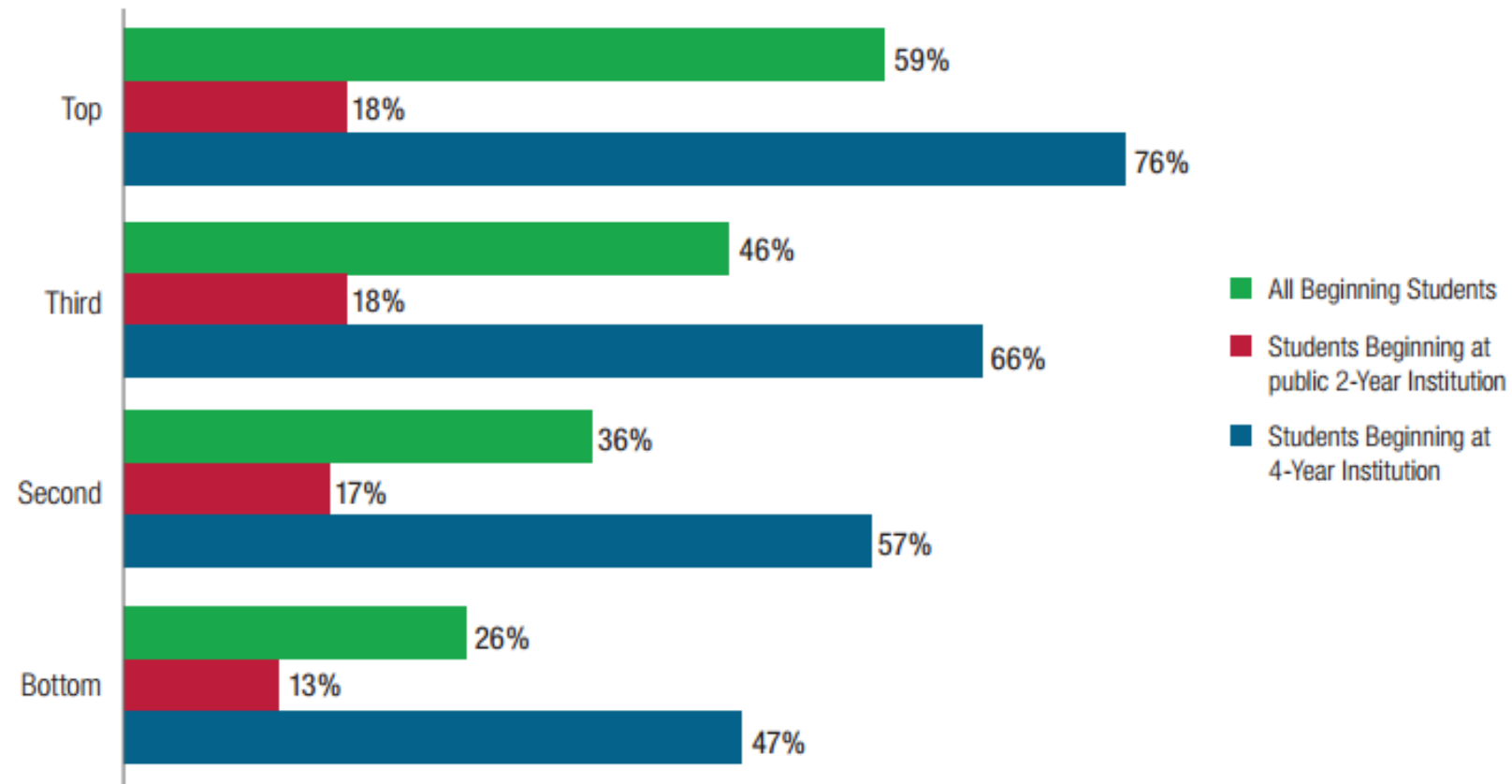
What do you  
think?

# Bachelor's Degree Completion

- In 2009, what percentage of low-income (bottom quartile) students who entered college completed a bachelor's degree within 6 years?
  - **26%**
  - 42%
  - 65%
  - 79%

# Bachelor's Degree Completion

**Revised Equity Indicator 5b: Percent of dependent first-time students who first enrolled in a postsecondary education institution in the 2003-04 academic year, who obtained a bachelor's degree within six years by level of first institution attended and family income quartile: Spring 2009**



# Questions?

# Tips?



**Supports for Getting  
into College:  
Fee Waivers**

# **ESEA Reauthorization: The Every Student Succeeds Act (ESSA)**

- Higher education provisions
  - The state EHCY plan must include a description of how homeless youth will receive assistance from school counselors to prepare and improve their readiness for college.
  - Local liaisons must inform unaccompanied homeless youth of their independent student status when applying for federal financial aid and assist these youth with verification of this status for the FAFSA.
- <http://center.serve.org/nche/legis/essa.php>



# Fee Waivers

---

- Fee waivers are available for homeless students for:
  - Advanced Placement (AP) exams  
<http://professionals.collegeboard.com/testing/waivers/guidelines/ap>
  - College entrance exams  
ACT: <http://www.actstudent.org/faq/feewaiver.html>  
SAT: <https://sat.collegeboard.org/register/sat-fee-waivers>

# Fee Waivers

---

– Fee waivers are available for homeless students for:

– College application fees

College Board:

<https://satresourcecenter.collegeboard.org/college-application-fee-waivers>

NACAC:

<http://www.nacacnet.org/studentinfo/feewaiver/Pages/default.aspx>



What do you  
think?

## What's the big deal about fees?

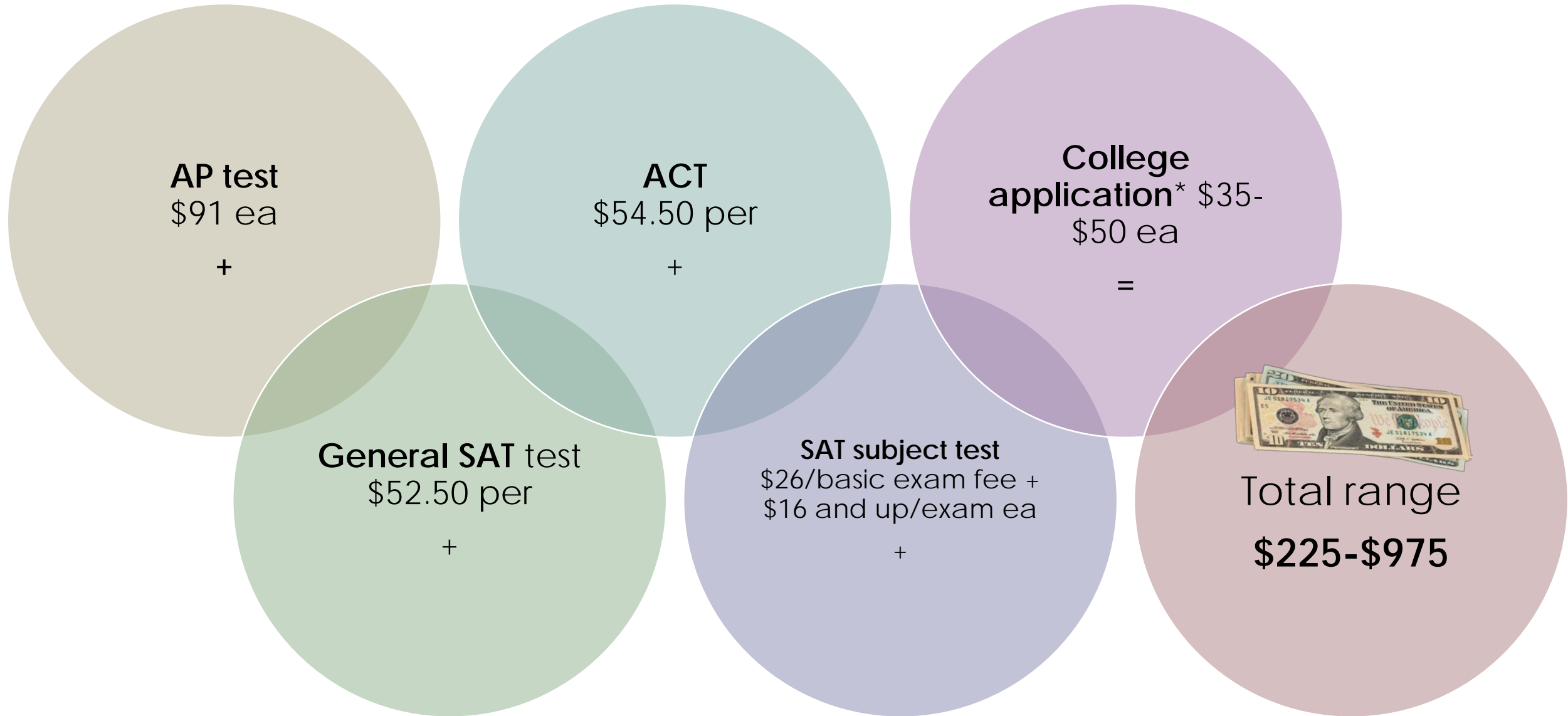
- A student who takes one AP test, takes one college entrance exam, and applies to five colleges will spend an average of \_\_\_ in fees.
  - \$222
  - \$356
  - \$575
  - \$845



What do you  
think?

## What's the big deal about fees?

- A student who takes one AP test, takes one college entrance exam, and applies to five colleges will spend an average of \_\_\_ in fees.
  - \$222
  - **\$356**
  - \$575
  - \$845



\*The College Board recommends that students apply to between 5 and 8 colleges.

# Questions?

# Tips?



**Supports for Getting  
into College:  
Financial Aid**

What do you  
think?

## Independent Student

- Sarah was in a foster care placement from age 10 to 15 and then was adopted by the Krieger family.
  1. Can Sarah apply for federal financial aid as an independent student?
  2. What does it mean to be an independent student?





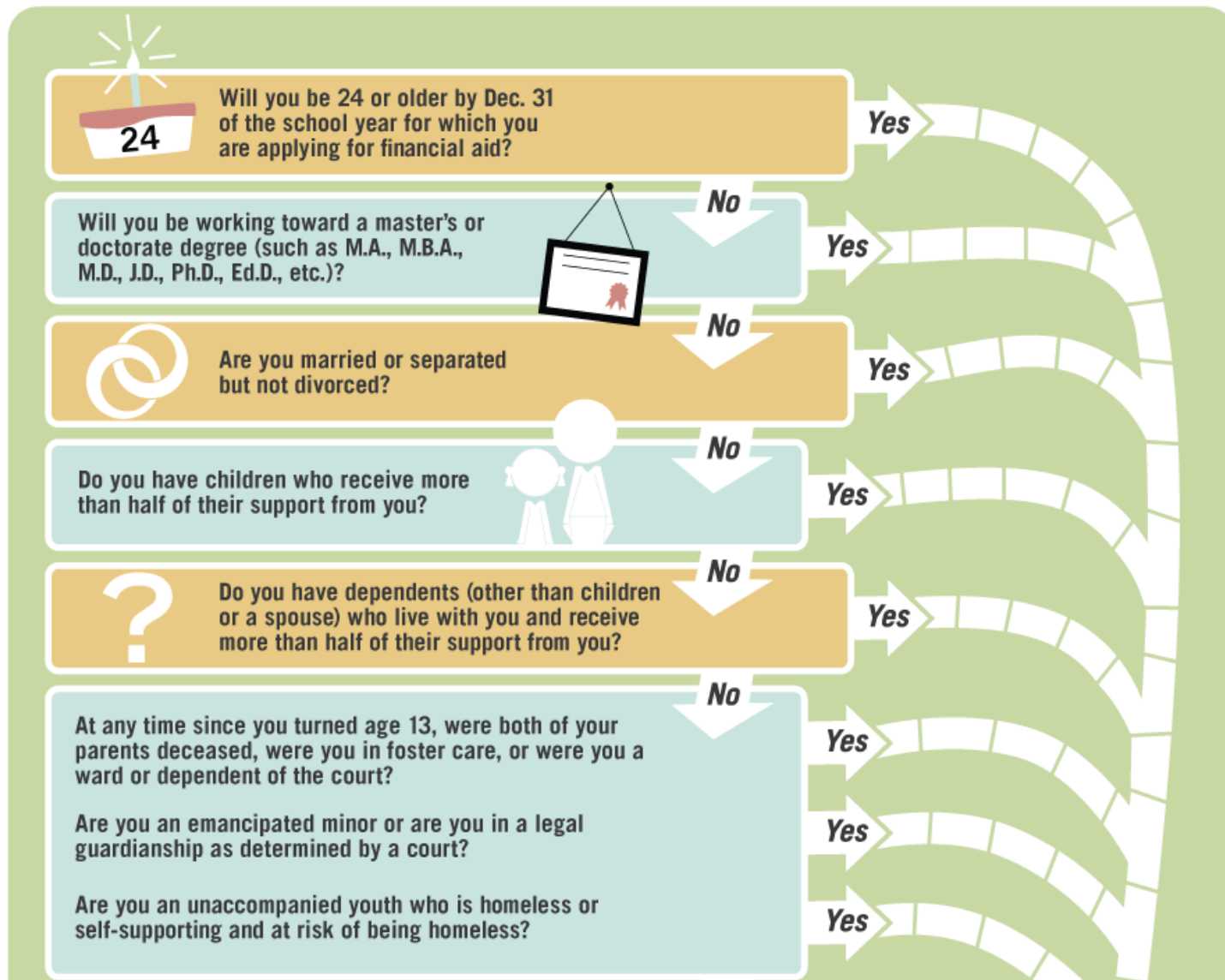
What do you  
think?

## Independent Student

- Yes, Sarah can apply for federal financial aid as an independent student because she was in foster care since she turned 13.
- Independent students report their own income and assets on the FAFSA, not those of their parents. Independent students also do not need a parent signature on the FAFSA.

# Do I Have to Provide My Parents' Information on the Free Application for Federal Student Aid (FAFSA<sup>SM</sup>)?

All applicants for federal student aid are considered either "independent" or "dependent." Dependent students are required to include information about their parents on the FAFSA. By answering a few questions, you can get a good idea of which category you fit into.





**You may be a  
Dependent Student**

If none of the criteria listed above apply to you, you may be considered a dependent student and may be required to provide your parents' financial information when completing the FAFSA.

**You may be an  
Independent Student**

If you answered yes to any of these questions, then you may be an independent student. You may not be required to provide parental information on your FAFSA.



**If you have questions about your dependency status or need more information, please visit [StudentAid.gov/dependency](http://StudentAid.gov/dependency).**

# Unaccompanied Homeless Youth

---

- **Unaccompanied**

Not in the physical custody of a parent or guardian

- **Homeless**

McKinney-Vento definition -

<http://center.serve.org/nche/legis/mv-def.php>

- **Youth**

Age 23 or under

July 2015 US ED Dear Colleague Letter -

<http://ifap.ed.gov/dpcletters/attachments/GEN1516Attachment.pdf>

# Determiners of Student Status

---

- Local liaisons (graduating high school seniors)
- Directors of shelters funded under the Runaway and Homeless Youth Act or by the U.S. Department of Housing and Urban Development (student received services)
- College financial aid administrators (any student)

# Documenting Student Status

---

- **For local liaisons and shelters**

*Unaccompanied Homeless Youth Documentation of Independent Student Status for the FAFSA*

<http://www.naehcy.org/educational-resources/higher-ed>

- **For financial aid administrators**

*Making Student Status Determinations for Unaccompanied Homeless Youth: Eligibility Tool for Financial Aid Administrators*

[http://center.serve.org/nche/pr/faa\\_tool.php](http://center.serve.org/nche/pr/faa_tool.php)

# “Accompanied” Homeless Students

---

- Include parental information on their FAFSA
- Federal aid package is calculated based on the Expected Family Contribution (EFC) and will reflect the family’s low-income status
- Understanding the EFC

<https://studentaid.ed.gov/sa/fafsa/next-steps/how-calculated>

# Scholarships

---

- List from high school counselor
- NAEHCY: <http://www.naehcy.org/naehcy-scholarship-fund/about-the-fund>
- Horatio Alger: <https://scholars.horatioalger.org/>
- Reputable scholarship search engines
  - Fastweb!: <http://www.fastweb.com/>
  - College Board: <https://bigfuture.collegeboard.org/scholarship-search>
  - U.S. Department of Education: <http://studentaid.ed.gov/types/grants-scholarships/finding-scholarships>



# Questions?

# Tips?



# Supports for College Completion

What do you  
think?

# Low College Completion Rates

- What factors might contribute to homeless students' low college completion rates?

What do you  
think?

## Low College Completion Rates

- Destabilizing effects of homelessness (physical, mental/emotional, financial, and academic)
- No educational role model (no experience of a "college-going culture", feel "out of place" or overwhelmed)
- No place to stay over extended breaks
- Others?

# Risk Factors for Non-Completion

---

- Part-time enrollment
- Delaying entry into postsecondary education after high school
- Not having a regular high school diploma
- Having dependent children
- Being a single parent
- Being financially independent of parents
- Working full-time while enrolled

# Community College?

---

- Risk factors common among non-traditional students, many of whom attend community college
- Myriad of responsibilities competing for time and attention
- Lower level of student engagement
- Poor planning for transferring to a 4-year institution

# Institutions Taking the Lead

---

- Florida State University
  - Center for Academic Retention and Enhancement - <http://care.fsu.edu/>
  - Unconquered Scholars Program - <http://care.fsu.edu/College-Programs/Unconquered-Scholars-Program>
- Kennesaw State University CARE Center - <http://www.kennesaw.edu/studentssuccessservices/care/>
- University of Massachusetts Boston U-ACCESS Program - [https://www.umb.edu/life\\_on\\_campus/uaccess](https://www.umb.edu/life_on_campus/uaccess)

What do you  
think?

## Needed Supports

- What kind of supports might a homeless youth need to complete college?



What do you  
think?

- Financial assistance
- Basic needs
- Housing assistance
- Academic support
- Career support
- Mental health support
- Others?

## Needed Supports

# Common Program Components

---

- Case management
  - Assess individual student needs
  - Coordinate service provision
- Housing assistance
  - Reduced, delayed, or waived housing deposits
  - Provision of housing during extended breaks
  - Use of private donations to assist with expenses (application fee, deposits, short-term rental assistance)

# Common Program Components

---

- The provision of basic needs
  - Campus food pantries
  - Transportation to the grocery store
  - Gas and grocery cards
- Academic and career support
  - Matching with an academic advisor
  - Skills workshops
  - Tutoring
  - Career advising

# Common Program Components

---

- Mental health support
  - Individual and group counseling
  - Targeted assistance for substance abuse and eating disorders
- Financial support
  - Dedicated liaison to the Office of Financial Aid (FSU)
  - Financial skills workshops
  - Dedicated scholarships or scholarship assistance

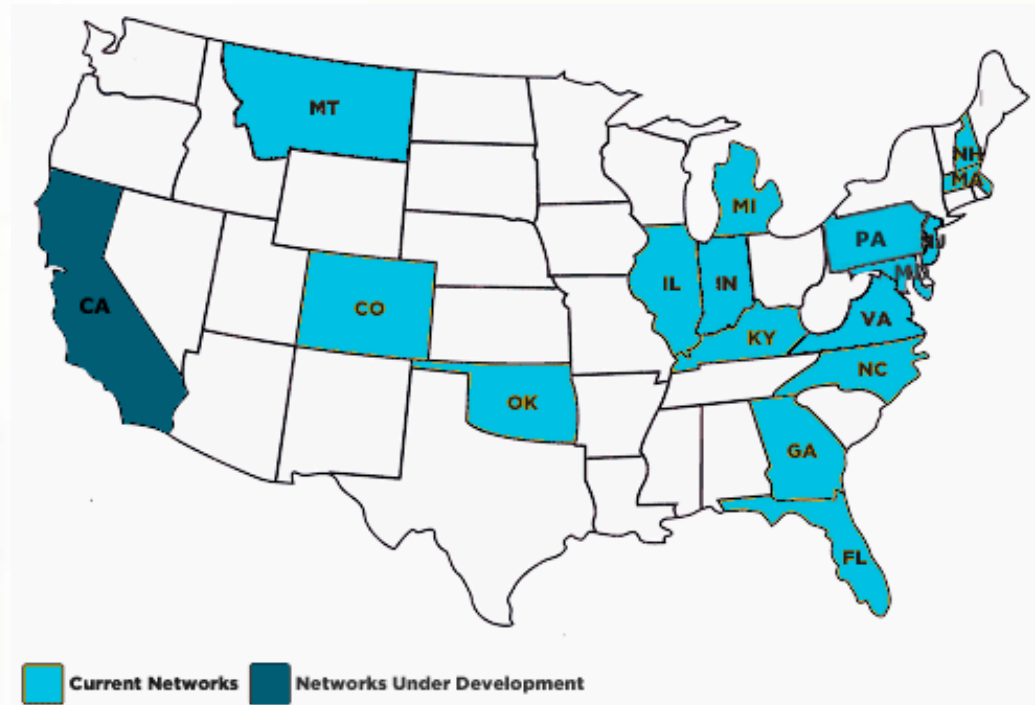
# Things to Remember

---

- Dedicated funding is not required (although it helps...)
- Leverage existing campus resources (funding, programs, people)
- Invite in-kind donations (funding and volunteering)

# NAEHCY State Networks

- The National Association for the Education of Homeless Children and Youth (NAEHCY) supports state-wide higher education networks - <http://naehcy.org/legislation-and-policy/state-he-networks>



# Questions?

# Tips?

# Resources

---

- NCHE Homeless Education Helpline  
[homeless@serve.org](mailto:homeless@serve.org), 800-308-2145
- NAEHCY Higher Education Helpline  
[highered@naehcy.org](mailto:highered@naehcy.org), 855-446-2673
- *Supporting College Completion for Students Experiencing Homelessness*  
<http://center.serve.org/nche/downloads/briefs/he-success.pdf>
- *College Access and Success for Students Experiencing Homelessness: A Toolkit for Educators and Service Providers*  
<http://naehcy.org/sites/default/files/dl/toolkit.pdf>